

Revisions		
Issue	Date	Note
3	17/09/2025	See GTXPDC/1130

1. Mechanical

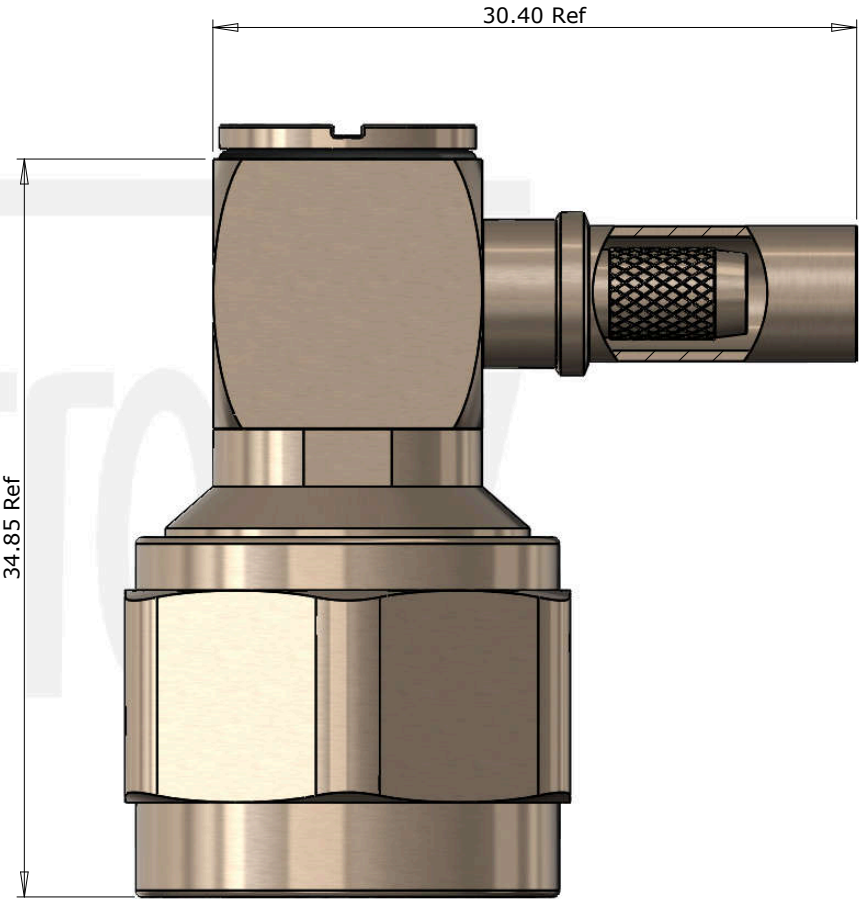
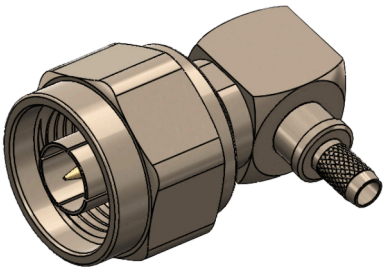
Cable Retention	Equal to breaking strain of cable
Durability	500 mating cycles
Fixing Method	Crimp
Contact Termination	Solder


2. Environmental

RoHS Compliant	Yes
Temperature Range	-65 to +165 degrees C

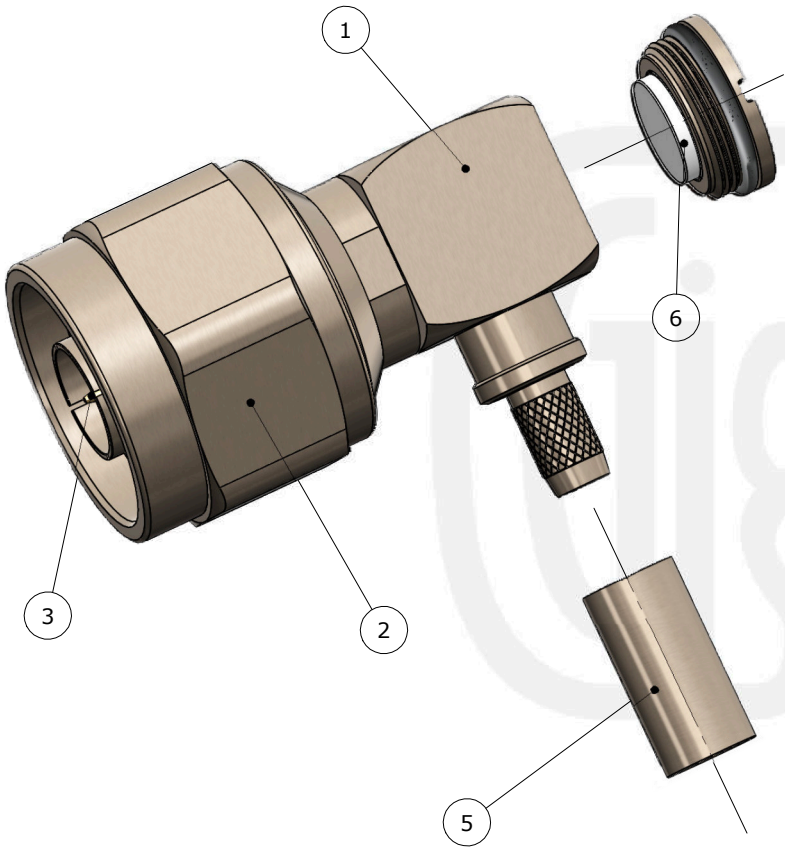
3. Electrical

Dielectric Withstanding	2500 Volts RMS Maximum
Impedance	50 ohms
Interface Frequency	11 GHz
Working Voltage	1500 Volts RMS Maximum



				<div>Unless otherwise specified tolerances 0.5-5 = ±0.2 >5-30 = ±0.4 >30-120 = ±0.6 >120-315 = ±1.0 >315-1000 = ±1.6 Angles = ±5° Units = mm</div>	<div></div>	Author PJP	
						Drawn by PJP	
6	End Cap	Brass	CTZ Tri-Alloy			Drawing date 20/08/2014	
5	Ferrule	Brass	CTZ Tri-Alloy			Checked by DB	
4	Dielectric	PTFE	White			Checked date 27/11/2015	
3	Pin	Brass	Gold			Scale Not to scale	
2	Coupling Nut	Brass	CTZ Tri-Alloy	<div>This document is the confidential property of Gigatronix Limited and may not be copied, reproduced or transmitted to any third party without written authorisation.</div>	Part Number	NT17-0058-C49WP	
1	Body	Brass	CTZ Tri-Alloy		Title: N Type Waterproof Crimp Right Angle Plug, IP68, Tri-Alloy Plated, Hex Coupling Nut, RG58, LBC195		
	Description	Material	Finish				

Revisions		
Issue	Date	Note
3	17/09/2025	See GTXPDC/1130



Assembly Instructions:

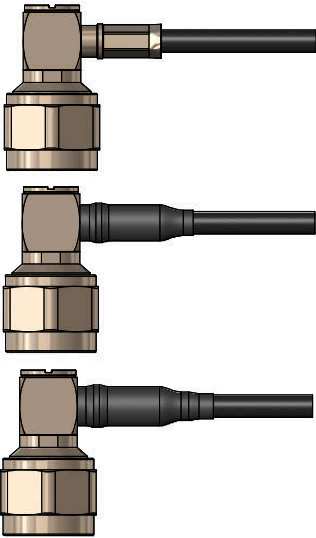
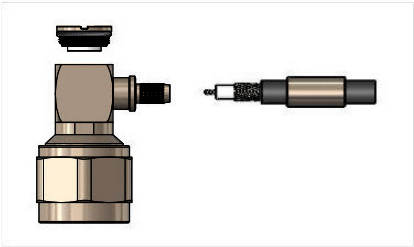
- 1) Slide the ferrule onto the cable and strip the cable to the dimensions as shown, taking care not to nick the centre conductor or braid
- 2) Insert the cable into the body, ensuring that the cable braid is on the outside of the connector mandril and that the centre core locates in the internal mounting post
- 3) Slide the ferrule forward and crimp. Solder the centre core of the cable to the mounting post and screw in the end cap
- 4) Apply adhesive lined heatshrink x 25mm up and over the mandril
- 5) Apply adhesive lined heatshrink x 30mm over the top of the first heatshrink

Strip Dimensions:

A=7.5mm, B=10.7mm, C=3.3mm




ASSEMBLY INSTRUCTIONS



Crimp Die Sizes:

5.41mm Hex., Solder centre core

				Unless otherwise specified tolerances 0.5-5 = ±0.2 >5-30 = ±0.4 >30-120 = ±0.6 >120-315 = ±1.0 >315-1000 = ±1.6 Angles = ±5° Units = mm		Author PJP	
						Drawn by PJP	
6	End Cap	Brass	CTZ Tri-Alloy			Drawing date 20/08/2014	
5	Ferrule	Brass	CTZ Tri-Alloy			Checked by DB	
4	Dielectric	PTFE	White			Checked date 27/11/2015	
3	Pin	Brass	Gold			Scale Not to scale	
2	Coupling Nut	Brass	CTZ Tri-Alloy	This document is the confidential property of Gigatronix Limited and may not be copied, reproduced or transmitted to any third party without written authorisation.	Part Number NT17-0058-C49WP		
1	Body	Brass	CTZ Tri-Alloy		Title: N Type Waterproof Crimp Right Angle Plug, IP68, Tri-Alloy Plated, Hex Coupling Nut, RG58, LBC195		
	Description	Material	Finish				