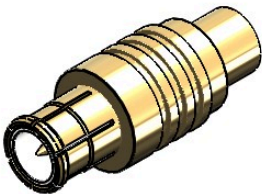


Revisions		
Issue	Date	Note
3	17/11/2025	See GTXPDC/1162



1. Mechanical

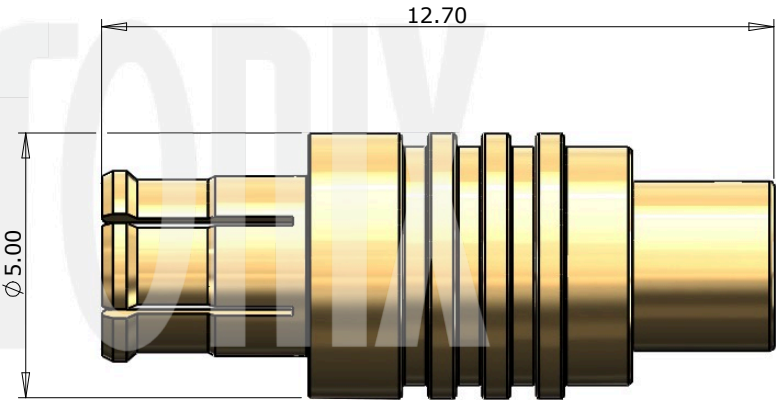
Fixing Method	Solder
Cable Retention	136N
Durability	500 mating cycles
Contact Retention	27N


2. Environmental

RoHS Compliant	Yes
Temperature Range	-65 to +165 degrees C

3. Electrical

Dielectric Withstanding	500 Volts RMS Maximum
Impedance	50 ohms
Interface Frequency	6 GHz
Working Voltage	250 Volts RMS Maximum



				<div>Unless otherwise specified tolerances 0.5-5 = ±0.2 >5-30 = ±0.4 >30-120 = ±0.6 >120-315 = ±1.0 >315-1000 = ±1.6 Angles = ±5° Units = mm</div>	<div></div>	Author	PJP
						Drawn by	PJP
						Drawing date	05/08/2018
						Checked by	DB
						Checked date	10/09/2018
						Scale	Not to scale
3	Dielectric	PTFE	White	<div>This document is the confidential property of Gigatronix Limited and may not be copied, reproduced or transmitted to any third party without written authorisation.</div>	Part Number MX15-0405-R01		
2	Pin	Brass	Gold		Title: MCX Solder Plug, Gold Plated, 50 ohms, .085 Semi-rigid, RG405 Conformable		
1	Body	Brass / Beryllium Copper	Gold				
	Description	Material	Finish				

Revisions		
Issue	Date	Note
3	17/11/2025	See GTXPDC/1162

ASSEMBLY INSTRUCTIONS

Assembly Instructions:

1) Strip the cable to the dimensions as shown, taking care not to nick the centre conductor



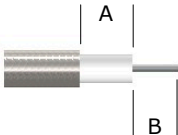
2) Solder the pin onto the centre core and slide the pin into the body, ensuring it is fully located

3) Solder the outer shield of the cable to the connector mandril




Strip Dimensions:

Conformable Cable - A=0.8mm, B=2.5mm
Semi Rigid Cable (using a 0.25mm spacer) - A=0.5mm, B=2.7mm



Conformable FEP - A=4.7mm, B=0.8mm, C=2.5mm



				<p>Unless otherwise specified tolerances 0.5-5 = ±0.2 >5-30 = ±0.4 >30-120 = ±0.6 >120-315 = ±1.0 >315-1000 = ±1.6 Angles = ±5° Units = mm</p>		Author	PJP
						Drawn by	PJP
						Drawing date	05/08/2018
						Checked by	DB
						Checked date	10/09/2018
3	Dielectric	PTFE	White	<p>This document is the confidential property of Gigatronix Limited and may not be copied, reproduced or transmitted to any third party without written authorisation.</p>	Part Number MX15-0405-R01 Title: MCX Solder Plug, Gold Plated, 50 ohms, .085 Semi-rigid, RG405 Conformable	Scale	Not to scale
2	Pin	Brass	Gold				
1	Body	Brass / Beryllium Copper	Gold				
Description		Material	Finish				