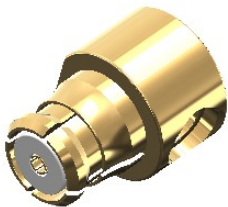


Revisions		
Issue	Date	Note
4	24/06/2025	See GTXPDC/1110



1. Mechanical

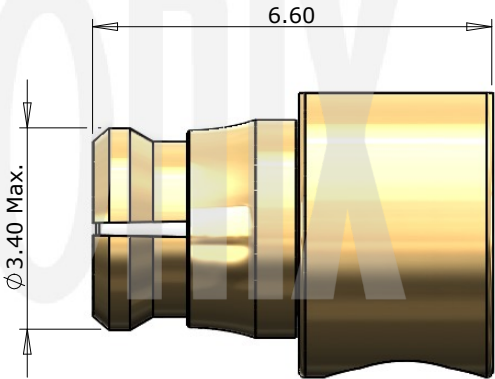
Fixing Method	Solder
Cable Retention	Equal to breaking strain of cable
Durability	Full Detent: 100 Cycles Limited Detent: 500 Cycles Smooth Bore: 1000 Cycles

2. Environmental

RoHS Compliant	Yes
Temperature Range	-65 to +165 degrees C

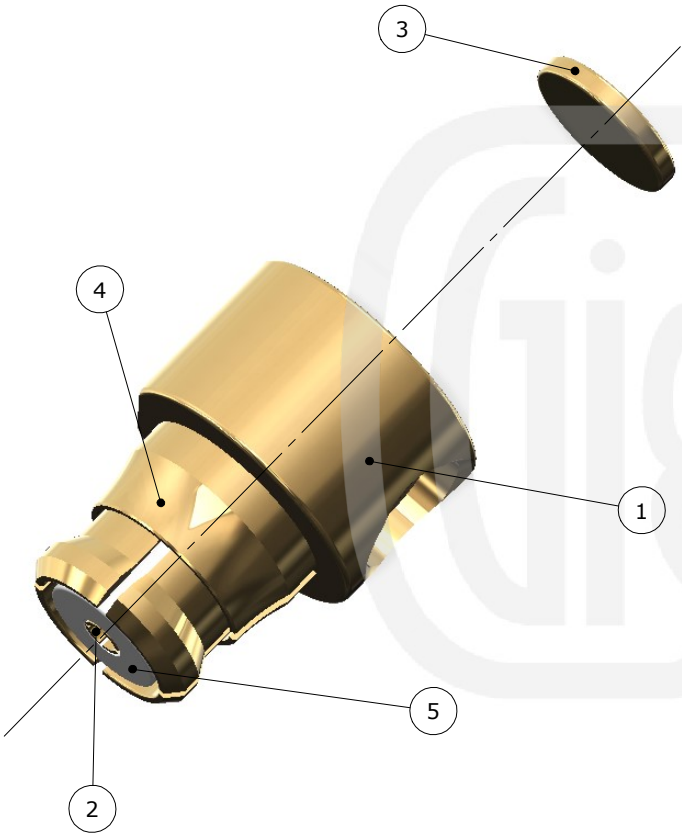
3. Electrical

Dielectric Withstanding	500 Volts RMS Maximum
Impedance	50 ohms
Interface Frequency	40 GHz
Working Voltage	335 Volts RMS Maximum



				<div> <div> Unless otherwise specified tolerances 0.5-5 = ±0.2 >5-30 = ±0.4 >30-120 = ±0.6 >120-315 = ±1.0 >315-1000 = ±1.6 Angles = ±5° Units = mm </div> <div> This document is the confidential property of Gigatronix Limited and may not be copied, reproduced or transmitted to any third party without written authorisation. </div> </div>	<div> <div> </div> <div> <div> <div> Part Number MP17-0405-R01 </div> <div> Title: SMP Direct Solder Right Angle Jack, RG405 Conformable </div> </div> </div> </div>	<div> <div>Author</div> <div>PJP</div> </div>
						<div> <div>Drawn by</div> <div>PJP</div> </div>
						<div> <div>Drawing date</div> <div>10/06/14</div> </div>
5	Dielectric	PTFE	White			<div> <div>Checked by</div> <div>GP</div> </div>
4	Ring	Beryllium Copper	Gold			<div> <div>Checked date</div> <div>07/05/15</div> </div>
3	End Cap	Brass	Gold			<div> <div>Scale</div> <div>Not to scale</div> </div>
2	Contact	Beryllium Copper	Gold			
1	Body	Beryllium Copper	Gold			
Description		Material	Finish			

Revisions		
Issue	Date	Note
4	24/06/2025	See GTXPDC/1110



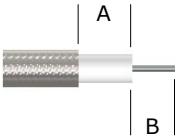
ASSEMBLY INSTRUCTIONS

Assembly Instructions

- 1) Strip the cable to the dimensions as shown, taking care not to nick the centre core.
- 2) Slide the cable into the body so that the centre core of the cable locates in the internal mounting post. Solder the outer shield of the cable to the back of the connector.
- 3) Solder the centre core and fit the end cap.




Strip Dimensions:
Semi Rigid Cable - A=0.5mm, B=1.5mm
Conformable Cable - A=1.0mm, B=1.0mm



Conformable FEP Cable - A=2.5mm, B=1.0mm, C=1.0mm



				<p>Unless otherwise specified tolerances 0.5-5 = ± 0.2 >5-30 = ± 0.4 >30-120 = ± 0.6 >120-315 = ± 1.0 >315-1000 = ± 1.6 Angles = $\pm 5^\circ$ Units = mm</p>		Author	PJP
						Drawn by	PJP
						Drawing date	10/06/14
						Checked by	GP
						Checked date	07/05/15
5	Dielectric	PTFE	White	<p>This document is the confidential property of Gigatronix Limited and may not be copied, reproduced or transmitted to any third party without written authorisation.</p>	Part Number MP17-0405-R01 Title: SMP Direct Solder Right Angle Jack, RG405 Conformable	Scale	Not to scale
4	Ring	Beryllium Copper	Gold				
3	End Cap	Brass	Gold				
2	Contact	Beryllium Copper	Gold				
1	Body	Beryllium Copper	Gold				
Description		Material	Finish				